

# W15-Brownfields to Goldfields

## Converting Non-Productive Industrial Lands into Valued Park Space

2019 PRO Educational Forum & Trade Show

*Presentation by:*

*Mark Jensen, BA, MPL, MCIP, RPP  
Director of Community and Development Services*

*City of Timmins*

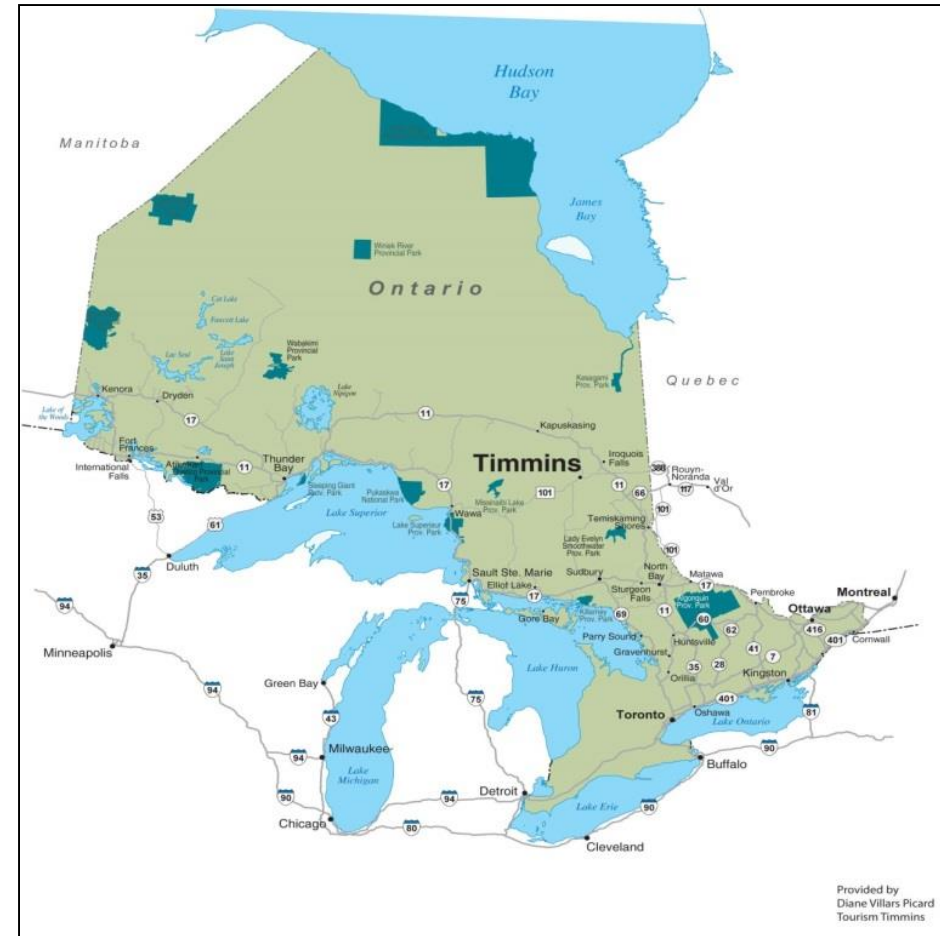


# Presentation Overview

- City of Timmins Profile
- Location of Hollinger Mine
- Hollinger Mine History
- Hollinger Project Video
- Before State – Mine Hazards
- Project Benefits
- Review & Approvals
- New Mining Project – Key Features
- After State - Park Space
- Project Status
- Lessons Learned
- Questions

# City of Timmins Profile

- Regional Centre – NE Ontario
- Local Population - 42,000
- Regional Population - 118,000
- Huge Geography - 2,962 km<sup>2</sup>
- Natural Resource Based Economy
- Limited Diversification





Aerial View of Timmins



# Location of Hollinger Mine

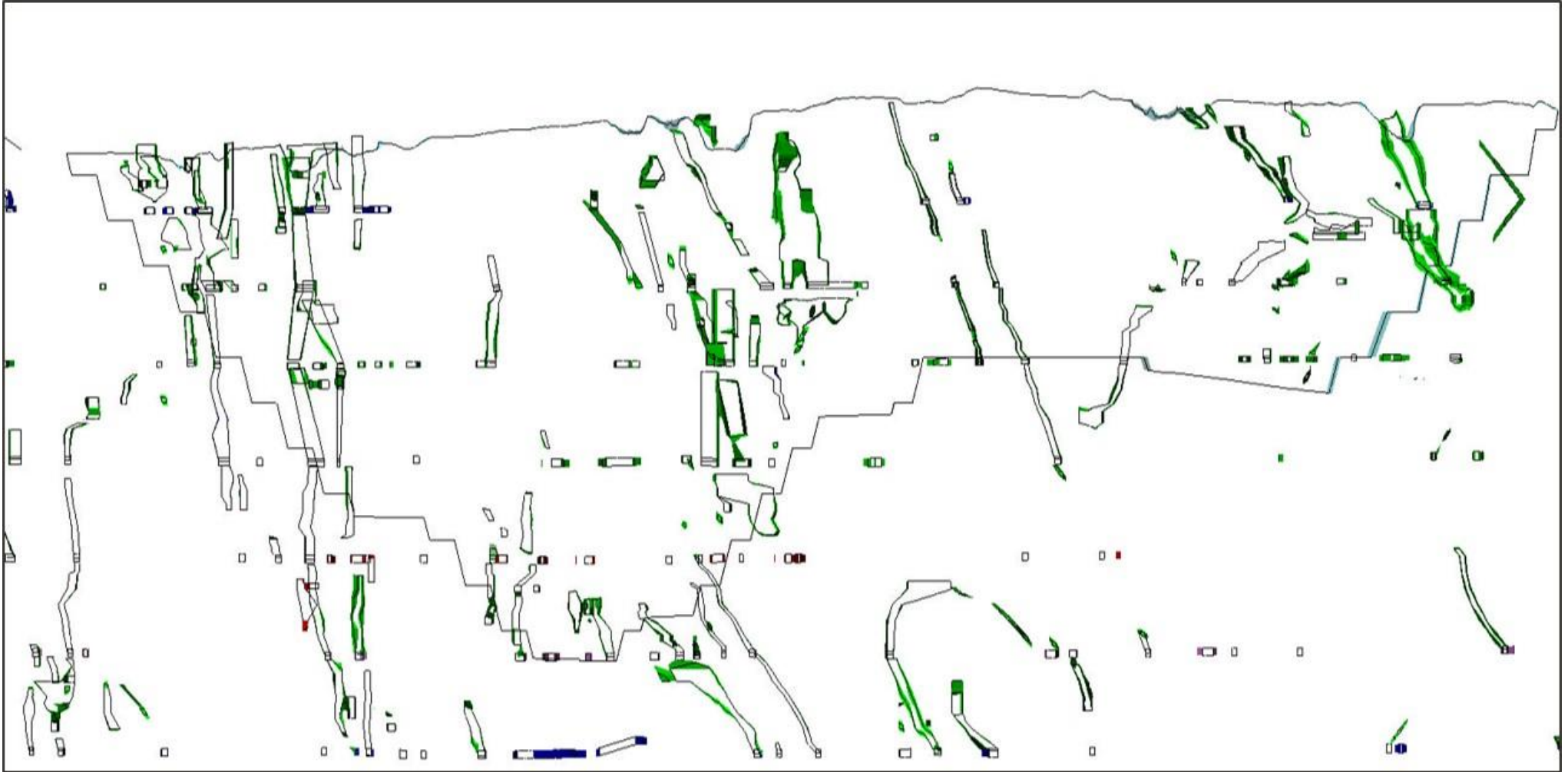


# Hollinger Mine History

- Hollinger Gold Mine discovered by Benny Hollinger - 1909
- Mining commenced - 1910
- Primarily underground mining
- Mining stopped - 1968
- 19.5 M Ounces of Gold Produced
- Restart by Goldcorp – 2015
- Open pit mining

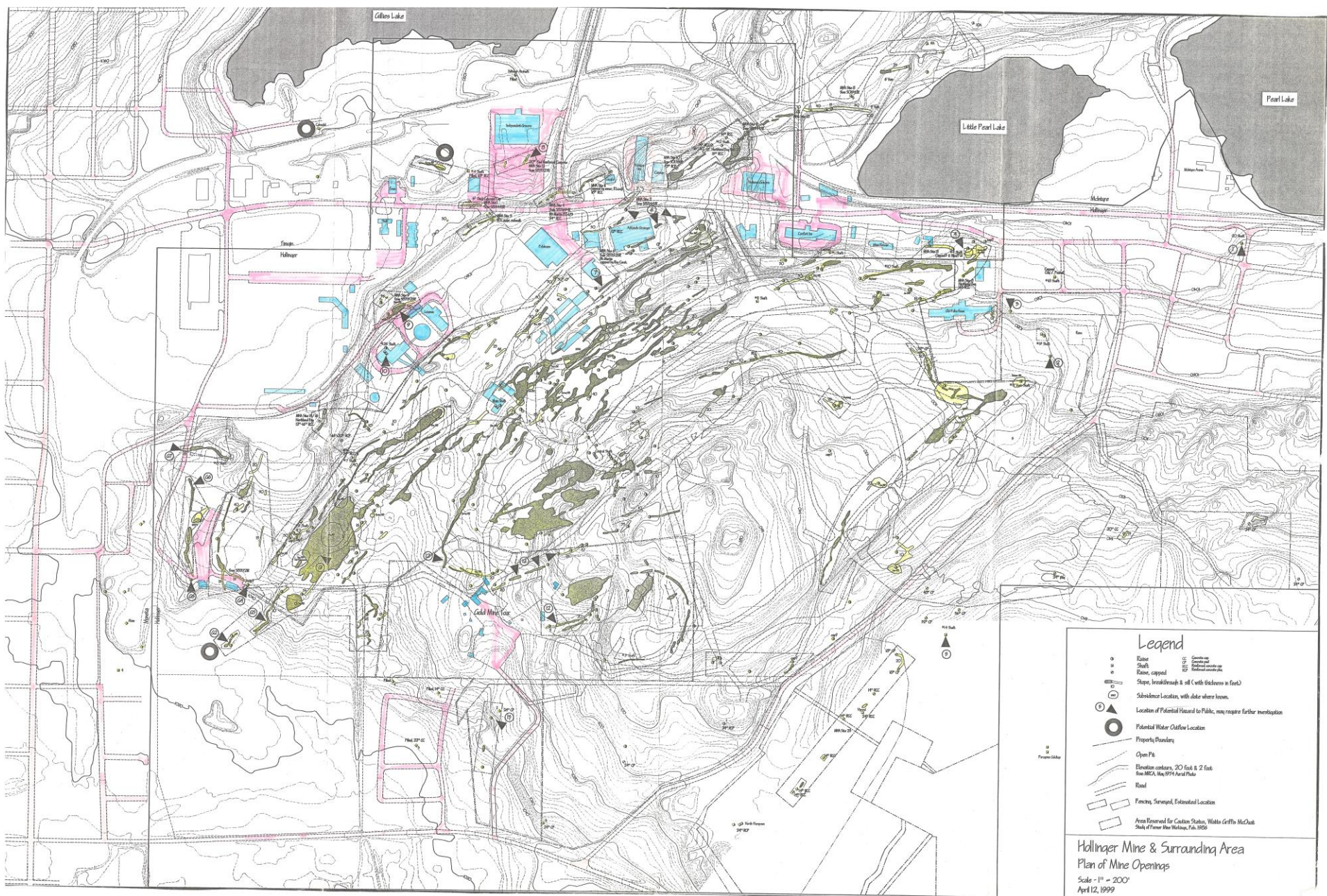
# Hollinger Project Video

# Before State - Mine Hazards



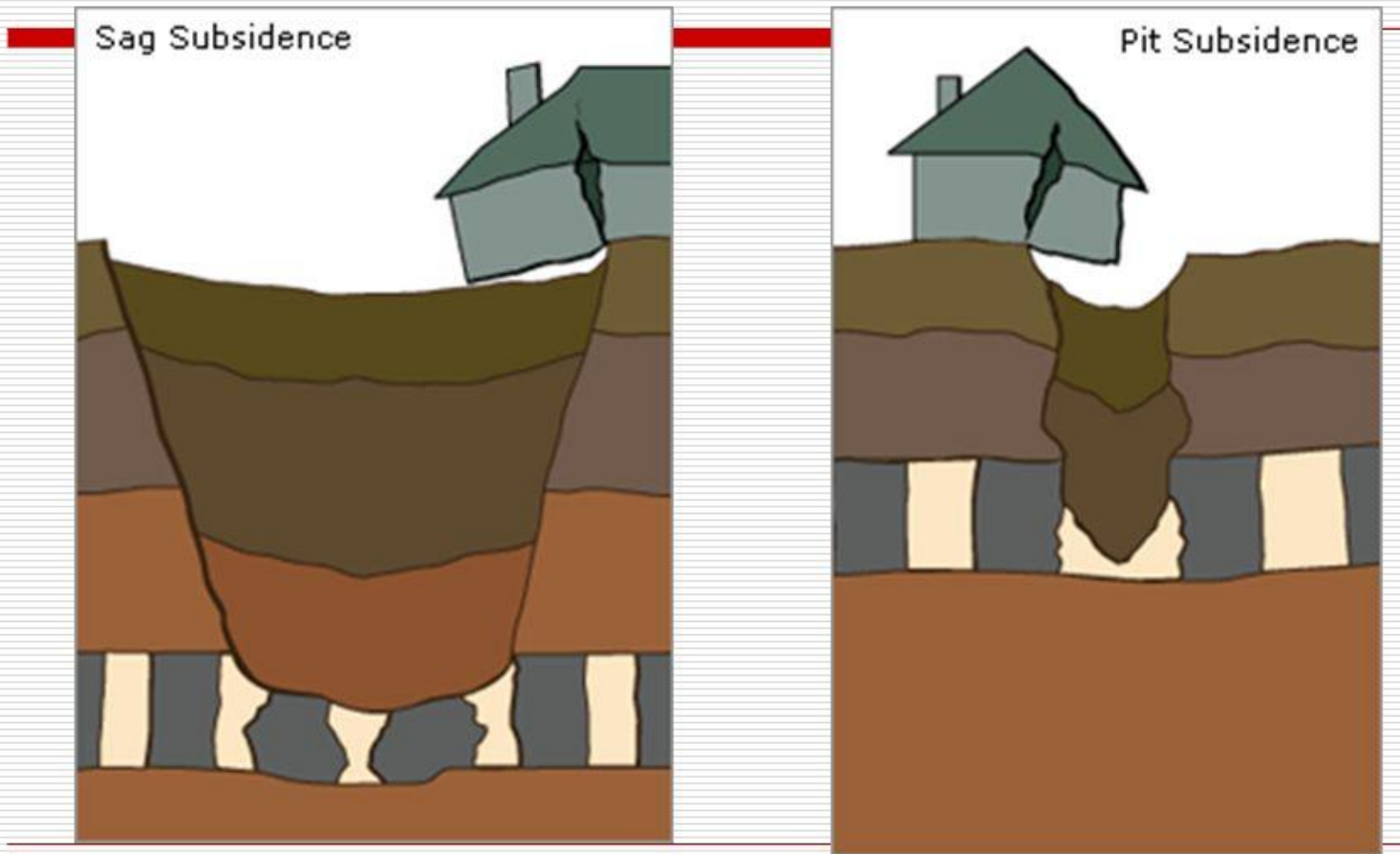
Underground Mine Workings







Aerial View of Hazards





Aerial Image of Hazards



Aerial Image of Hazards



Hazards Near Development





Subsidence - Golf Course



Subsidences – Golf Course







Subsidence – Acklands-Grainger



# Project Benefits

## ➤ Economic Benefits

- Upwards of 850,000 ounces of gold
- Direct Employment – 130 new; 250 sustained jobs
- Indirect Employment – 3:1 ratio; results 390 spin-off jobs
- Capital Spending - \$87 M; Operating \$565 M
- 8 to 10 year mine life

## ➤ Environmental/Social Benefits

- Elimination of mine hazards
- Creation of usable open space



# Review & Approvals

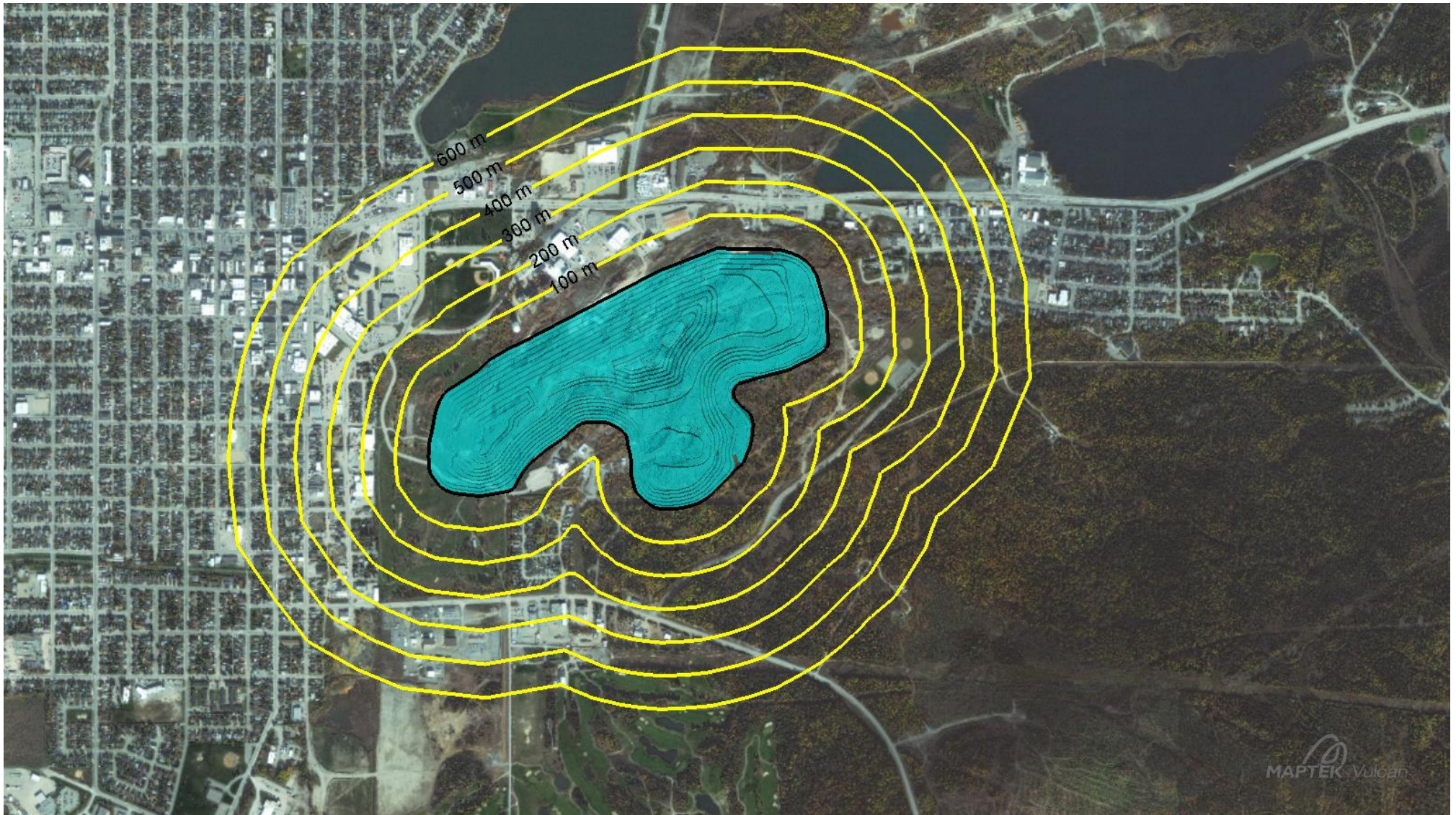
## ➤ Extensive & Complex Approvals Process

- >30 supportive studies
- 3<sup>rd</sup> party reviews
- Land Acquisition & Demolition
- Public consultation, including ongoing advisory committee
- 12 separate approvals involving 3 levels of government
  - Mitigative measures (dust, noise, vibration)
  - Monitoring program
  - Complaint resolution
  - Progressive rehabilitation
  - Closure & end use plans – \$10 M Letter of Credit



Shania Twain Centre

# New Mining Project – Key Features



100 m contours





Mine & Berm Conceptual







**HOLLINGER**

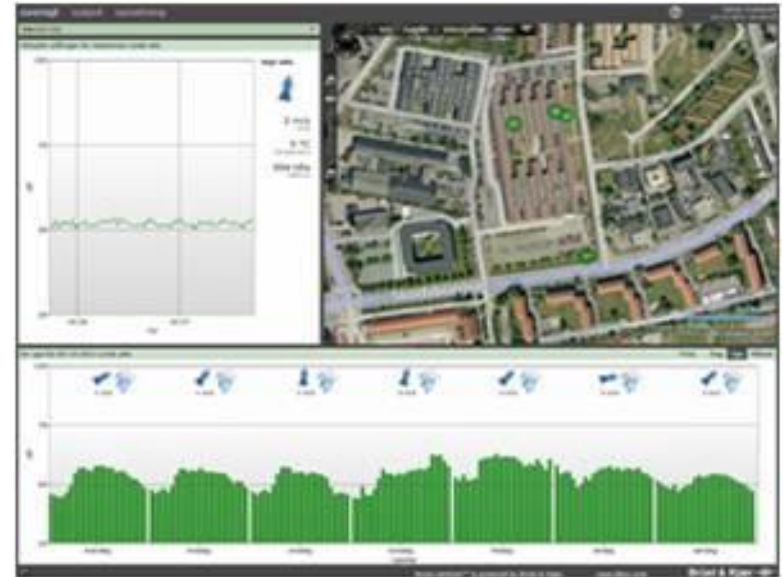
**DOME**





Haul Road



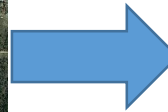






# After State – Park Space

**Before**



**After**



**GOLDCORP**  
PORCUPINE GOLD MINES

Hollinger - Conceptual Plan, Aerial Perspective  
May 10, 2013

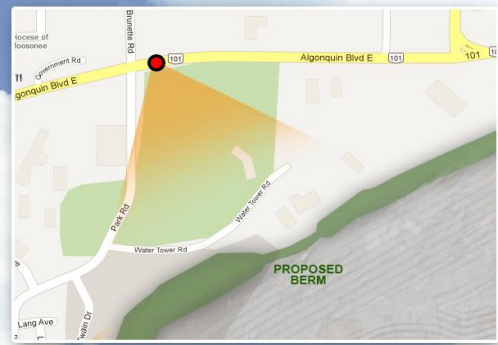






Viewing Angle

Vegetated Berm



Viewing Angle

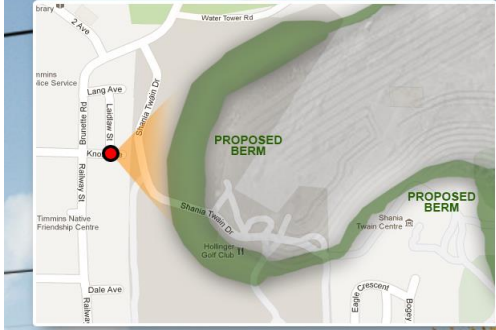


 **GOLDCORP**

Vegetated Berm

**Artistic Rendering of Berm at Hollenger Park  
(Near Algonquin Blvd E and Park Rd)**





Viewing Angle



 **GOLDCORP**

**Artistic Rendering of Berm at Laidlaw Street**

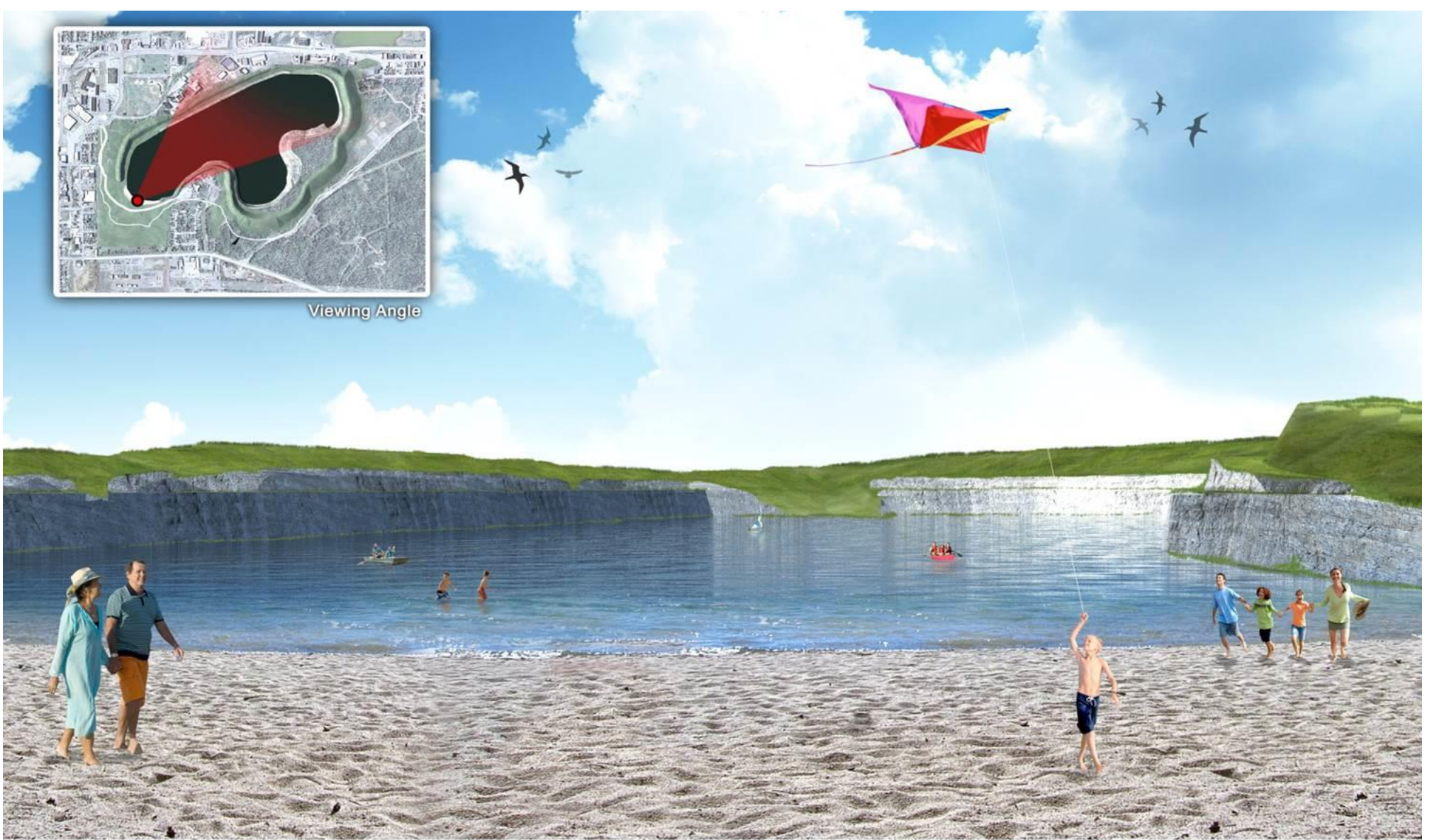
Vegetated Berm







Viewing Angle



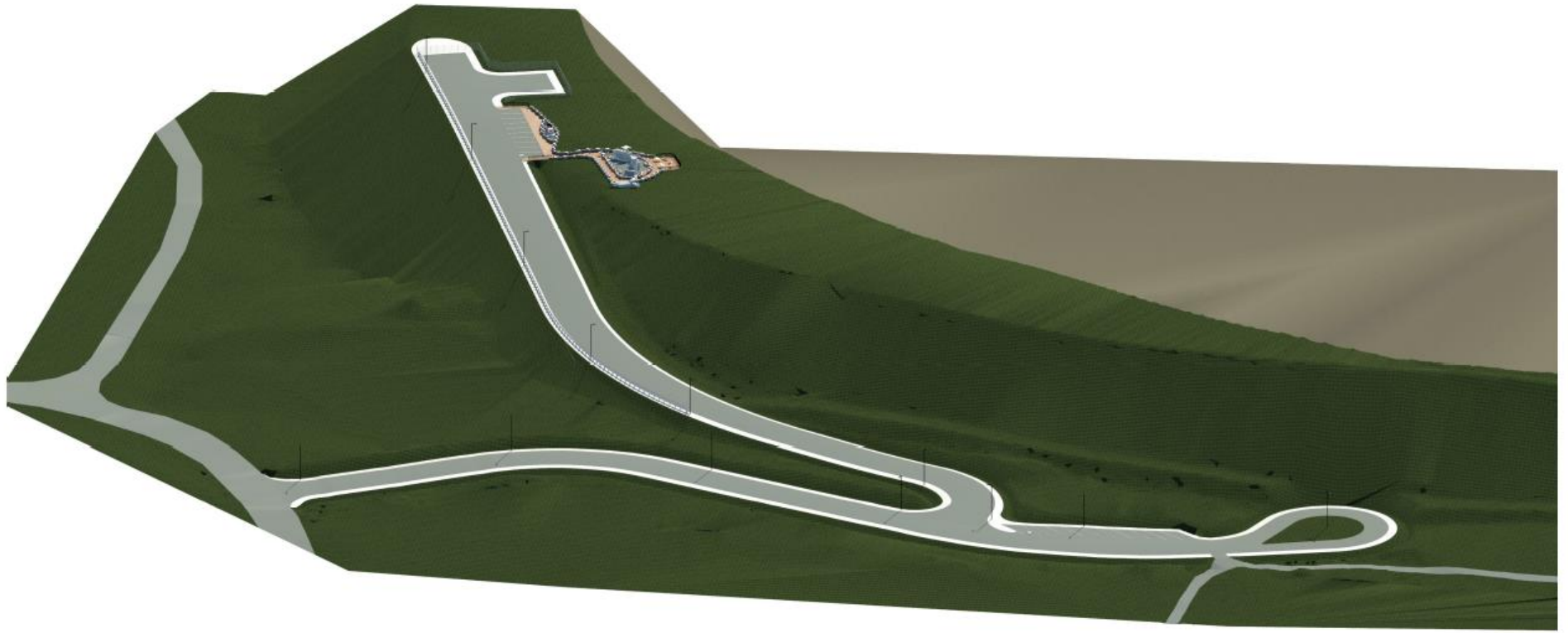
 **GOLDCORP**

**Hollinger Reclamation Concept Water Access View**

Beach Area







10/16/2020 - 10:00 AM - 10:00 AM - 10:00 AM - 10:00 AM - 10:00 AM



J.L. Richards  
 & Associates Limited  
 251-130 Algonquin Blvd. East  
 Timmins, ON, Canada  
 P4N 1A7  
 Tel: 705 360 1859  
 Fax: 705 360 1788

HOLLINGER LEGACY PARK LOOKOUT

SHEPPARD AVENUE, TIMMINS, ONTARIO

RENDERING - OVERALL LOOKING EAST

27201  
R1



POINT OF VIEW





# Project Status

- Haul road completed - 2011
- Construction of overpasses – 2012
- Mining Approvals – 2010 to 2015
- Clearing of overburden – 2013
- Berm construction – 2015
- Mining activity commenced 2014
  - Full Production in 2015
- Progressive rehabilitation started in 2016
- Total complaints from mine start-up - 1,267
  - ±90% (1,141 complaints from 3 residents)







Aerial View - Berm & Mine



Aerial Image of Mine/Haul Rd



Mining Activity Inside Berm













# Lessons Learned

- Competing land uses can co-exist:
  - Tailored planning policy, regulations and agreements
  - Transparency & communications
  - Mitigation, monitoring and adjustments
  - Responsive complaint resolution
  
- Possible to realize both economic & social benefits:
  - Benefits of mining – job creation
  - Transformation of lands to a higher and better use
  
- Commitment to an end use vision:
  - Strong partnership
  - Public consultation and engagement
  - Buy-in for the end use plan
  - Progressive rehabilitation
  - Financial security
  
- Park land assumption cost implications
  - Operating and capital

# Thank You!



mark.jensen@timmins.ca